



a Standex company

ITEM: _____ PROJECT NAME: _____ DATE: _____

REFRIGERATED SELF-SERVE ISLAND MERCHANDISER

MODEL ☐ IMSS120SC-2

☐ IMSS120SC-3



Designed with impulse sales in mind. Get maximum return and increased profits with shop-around merchandising.

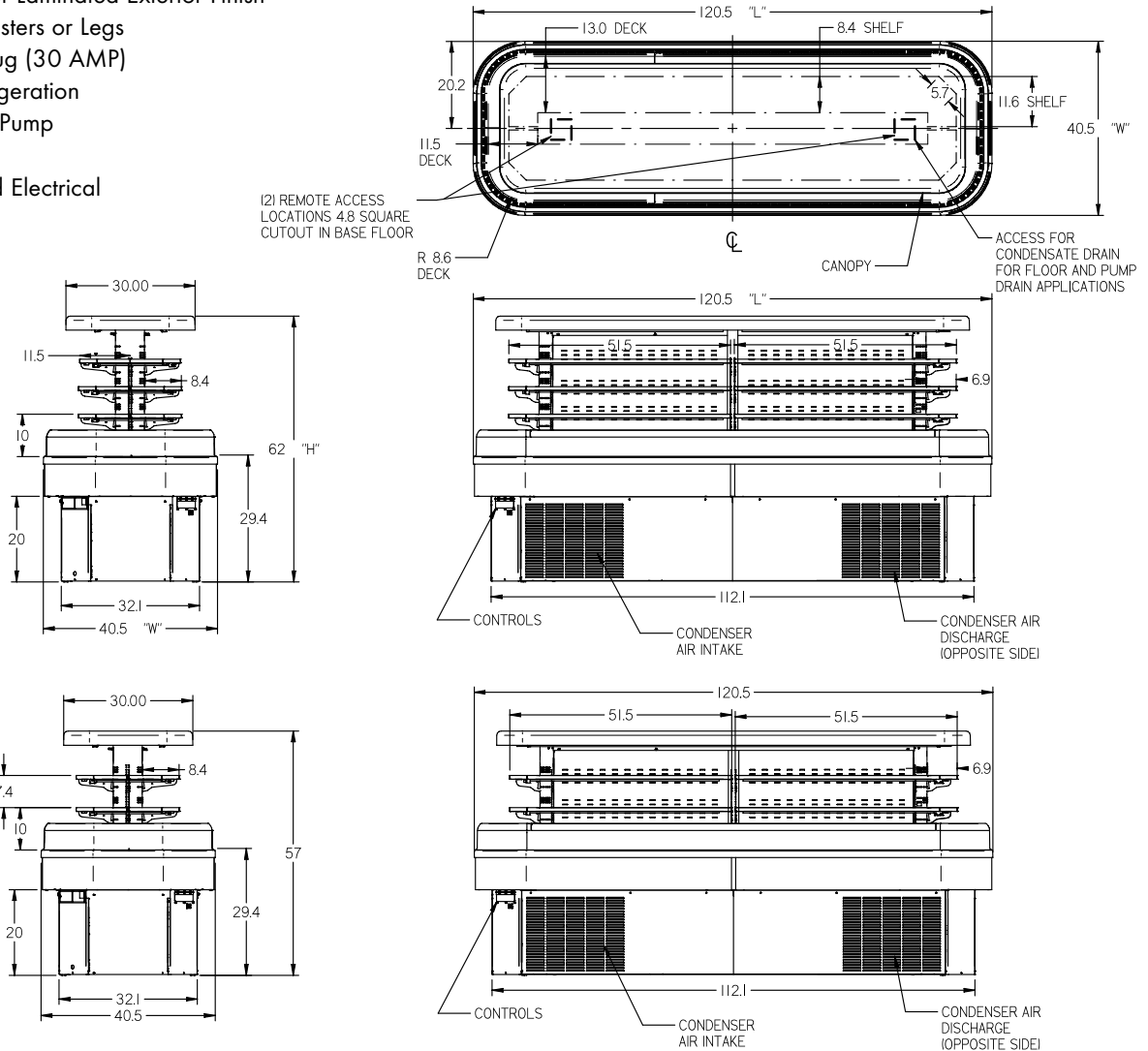
STANDARD FEATURES

- Adjustable black metal shelves, two or three tiers.
- LED top and undershelf lighting.
- Black metal base, interior and canopy. Choice of six standard laminates on exterior. Other color laminates are optional.
- Curved air deflector.
- Condensate evaporator provided for a totally self-contained system.
- Easy clean, rustproof insulated evaporator coil compartment.
- Adjustable feet.
- Easily accessible light switch and temperature control.
- Condensate pump provided on model IMSS120SC-2 and all remote models.
- Refrigeration controls maintain 40°F. Note: Case temperature will vary if the air curtain is disrupted.
- R404 Refrigerant.
- Insulated with high-density foam.
- Thermometer.
- UL Safety and UL Sanitation Listed to NSF Standard No. 7.
- DOE Compliant.

REFRIGERATED SELF-SERVE ISLAND MERCHANDISER

OPTIONAL ACCESSORIES:

- ☐ Special Color Laminated Exterior Finish
- ☐ Recessed Casters or Legs
- ☐ Cord and Plug (30 AMP)
- ☐ Remote Refrigeration
- ☐ Condensate Pump
- ☐ Cart Bumper
- ☐ Top-Mounted Electrical



SPECIFICATIONS:

| Model | Dimensions L W H | Shipping Weight (lbs) | Display Area (square feet) | Self-Contained with Condensate Pan 208-240/60/1 | Remote with Condensate Pan 208-240/60/1 |
|--------------------------------------|----------------------|-----------------------------|-------------------------------|---|---|
| <input type="checkbox"/> IMSS120SC-2 | 120.5" x 40.5" x 57" | 1,550 | 2 Tiers - 45.9 | 2 1/2 HP • 30 AMPS | 13 AMPS |
| <input type="checkbox"/> IMSS120SC-3 | 120.5" x 40.5" x 62" | 1,600 | 3 Tiers - 58.3 | 2 1/2 HP • 30 AMPS | 13 AMPS |

- **NOTE WHEN DIRECT WIRING THE CASE - A 40 AMP MINIMUM CIRCUIT IS REQUIRED**
- Case temperature will vary if the air curtain is disrupted.
- Refrigerated cases are designed to operate in a maximum environment of 75°F ambient and 55% relative humidity.
- Due to continuing engineering improvements, specifications are subject to change without notice.



The Signature of Quality

FEDERAL INDUSTRIES
A Standex Company

215 FEDERAL AVENUE, BELLEVILLE, WISCONSIN 53508-9201

PHONE: 800-356-4206

EMAIL: geninfo@federalind.com

FAX: 608-424-3234

WEBSITE: www.federalind.com

