

Harmony

ITEM NO: _____
 PROJECT: _____
 DATE: _____

Product Specifications

Combination Convertible Service Above Refrigerated Self-Service Case



MODEL SHOWN: HMBC4

NOTE: NON-DIVIDED UPPER DISPLAY AREA - HMBC2 & HMBC3
 DIVIDED UPPER DISPLAY AREA - HMBC4, HMBC5 & HMBC6

- HMBC2
- HMBC3
- HMBC4
- HMBC5
- HMBC6

Lengths include end panels
 27"L x 34-1/8"D x 56-1/4"H
 39"L x 34-1/8"D x 56-1/4"H
 51"L x 34-1/8"D x 56-1/4"H
 63"L x 34-1/8"D x 56-1/4"H
 75-3/8"L x 34-1/8"D x 56-1/4"H

STANDARD FEATURES

- Breeze™ w/EnergyWise s/c refrigeration
- Clear glass shelf, lighted (LED 3500K) in upper display
- Compressor air rear intake, front discharge. Toe kick cannot be blocked
- Condensate pan (self-contained refrig. only)
- Convertible baffle in upper display
- Curved double pane, lift-up front glass w/o lock
- Cutaway end panel
- Flat front panel
- Integrated average product temperature of 40°F or less
- LED 3500K top & shelf lights
- One year parts & labor; 5 year compressor warranty
- Rear sliding doors (26" model swinging)

Features	Standard	Options
EXTERIOR COLOR	<input type="checkbox"/> Laminated (non-premium) Confirm pattern/grain direction	<input type="checkbox"/> Laminated (premium) Confirm pattern/grain direction <input type="checkbox"/> Stainless steel (includes rear of case)
INTERIOR COLOR	<input type="checkbox"/> Black	<input type="checkbox"/> Stainless steel <input type="checkbox"/> White
REAR EXTERIOR COLOR	<input type="checkbox"/> Painted - White	<input type="checkbox"/> Painted - Black <input type="checkbox"/> Stainless steel (w/stainless ext. only)
TRIM COLOR	<input type="checkbox"/> Black	<input type="checkbox"/> Silver
BASE	<input type="checkbox"/> Levelers	<input type="checkbox"/> 6"H legs <input type="checkbox"/> Casters (n/a with remote)
LOWER REAR	<input type="checkbox"/> Solid back panel	<input type="checkbox"/> Rear sliding doors w/o lock (26" model swinging) (specify LH or RH hinge)
UPPER REAR	<input type="checkbox"/> Clear glass rear sliding doors w/o lock (26" model swinging) (specify LH or RH hinge)	<input type="checkbox"/> Reflective glass rear sliding doors w/o lock (26" model swinging) (specify LH or RH hinge)
ELECTRICAL CONNECT	<input type="checkbox"/> 6' straight blade power cord (self-cont.)	<input type="checkbox"/> 6' locking power cord (self-cont.) <input type="checkbox"/> Electrical leads (remote)
REFRIGERATION	<input type="checkbox"/> Breeze™ w/EnergyWise s/c refrigeration	<input type="checkbox"/> Note: Remote doesn't incl Conds unit. Floor drain reqd. <input type="checkbox"/> Remote w/thermostat, solenoid & TXV
MISCELLANEOUS		<input type="checkbox"/> Additional shelf for upper display, lighted (LED) <input type="checkbox"/> Lower rear door lock <input type="checkbox"/> Second year parts & labor warranty (excludes compressor) <input type="checkbox"/> Upper rear door lock
ACCESSORIES		<input type="checkbox"/> 2"H Full depth display riser(s) for lower display <input type="checkbox"/> 4"H Full depth display riser(s) for lower display <input type="checkbox"/> Bottle slide, gravity feed <input type="checkbox"/> Clean Sweep® coil cleaner (n/a w/remote) <input type="checkbox"/> Night curtain, retractable, non-locking <input type="checkbox"/> Price tag molding (matches interior color) <input type="checkbox"/> Rear wrapping board (n/a w/lower rear doors) <input type="checkbox"/> Removable wire security cover, locking (for lower display, secures upper/lower)

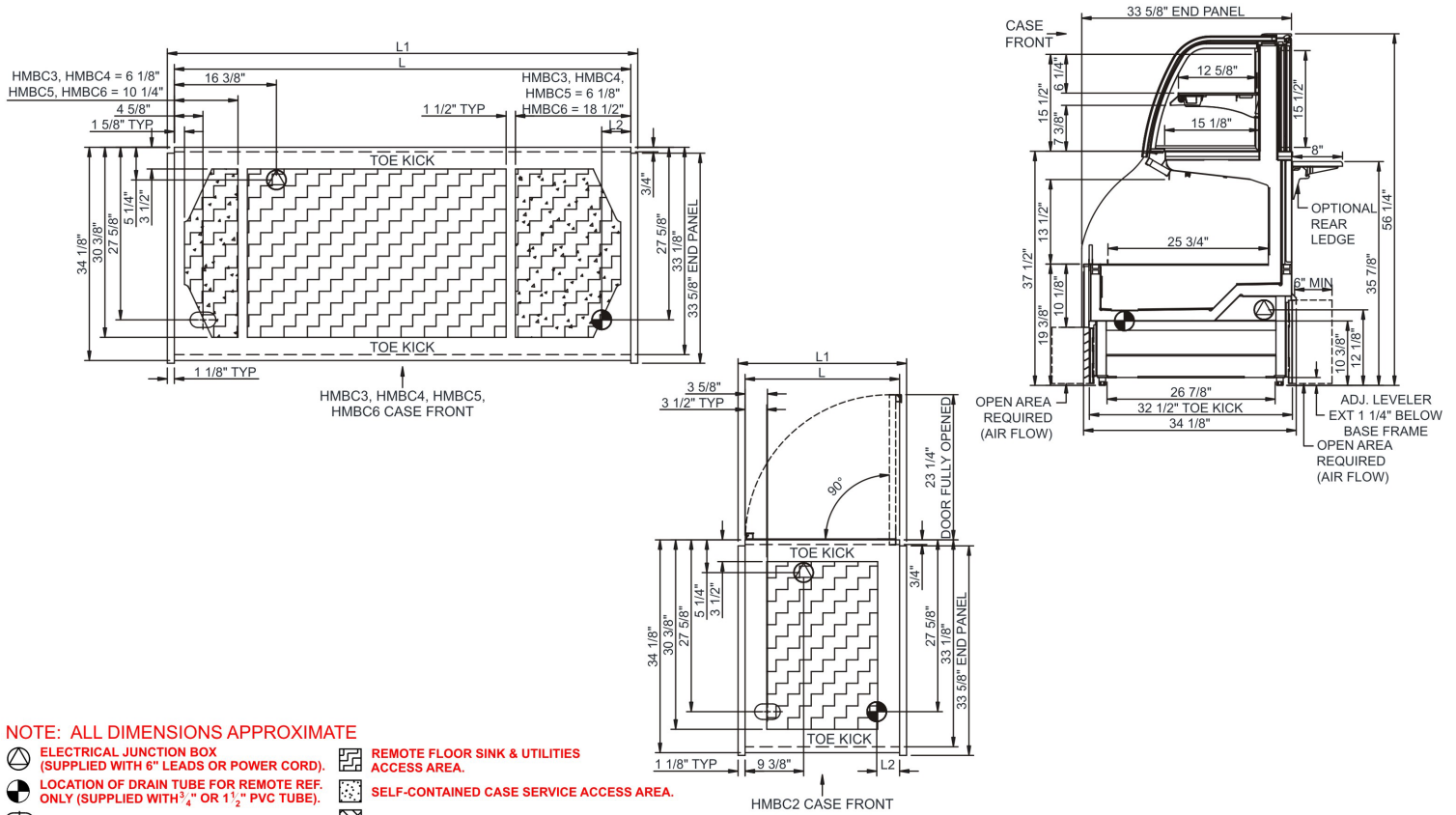
Harmony

Product Specifications

Intended Environment: Type I - Designed to operate in ambient conditions of 75°F with 55% relative humidity unless noted otherwise in system information below.		
Zone	Intended Product To Be Displayed	Warmest Avg Prod Temp ° F
1	Packaged refrigerated products	40

PLAN VIEW

SIDE VIEW



Model Technical Specifications

Model	L"	L1"	L2"	System Circuit Volts		Phs	Freq	Amps ***	Watts	Wires	NEMA Plug	SST	Conv. Rack BTUH	Para. Rack BTUH	Est Wt	
HMBC2	N/A	27.00	3.63	Remote(Type I)	Circuit #1	110-120	1	60	1.66	163	2+G	Leads Multiple	20.00	2506	2320	650
				Self-Contained	Circuit #1	110-120	1	60	14.92	1,415	2+G	5-20P or L5-20P	N/A	N/A	N/A	
HMBC3	N/A	39.00	4.63	Remote(Type I)	Circuit #1	110-120	1	60	1.38	138	2+G	Leads Multiple	20.00	4104	3800	900
				Self-Contained	Circuit #1	110-120	1	60	15.84	1,502	2+G	5-20P or L5-20P	N/A	N/A	N/A	
HMBC4	N/A	51.00	4.63	Remote(Type I)	Circuit #1	110-120	1	60	2.69	194	2+G	Leads Multiple	20.00	5270	4880	950
				Self-Contained	Circuit #1	120/230V	1	60	10.19	1,763	3+G	14-20P or L14-20P	N/A	N/A	N/A	
HMBC5	N/A	63.00	4.63	Remote(Type I)	Circuit #1	110-120	1	60	2.93	152	2+G	Leads Multiple	20.00	6307	5840	1,100
				Self-Contained	Circuit #1	120/230V	1	60	11.23	2,172	3+G	14-20P or L14-20P	N/A	N/A	N/A	
HMBC6	N/A	75.38	4.63	Remote(Type I)	Circuit #1	110-120	1	60	3.05	262	2+G	Leads Multiple	20.00	6912	6400	1,200
				Self-Contained	Circuit #1	120/230V	1	60	12.00	2,091	3+G	14-20P or L14-20P	N/A	N/A	N/A	

*** Does not include electric defrost on freezer models.

Important Notes:

- 1) ELECTRICAL NOTE: If GFCI is required, a GFCI breaker MUST be used in lieu of a GFCI receptacle
- 2) 35" Minimum door entry clearance required (without shipping skid).
- 3) Units are supplied with levelers which must be adjusted during installation to ensure the unit is level and plumb.

⚠ WARNING: This product can expose you to chemicals, including Urethane (Ethyl Carbamate), which are known to the State of California to cause cancer and birth defects or other reproductive harm. For more information go to www.P65Warnings.ca.gov.

Regulatory Approvals:	
All Models	Accordance with AHRI Std 1200 ETL Listed to UL 471 ETL Listed to CAN/CSA 22.2 No. 120 ETL Sanitation to NSF 7



In Accordance with
AHRI Std 1200

DOE 2017
Energy Efficiency
Compliant