

Product Specifications Sheets



Model No.	Description	Length	Depth	Height	Voltage	Amps	Power Cord	Est. Ship Weight
CHS35-4	3 Wells	50"	35.5"	52"	115	3.8/11.6	NO	480
CHS35-6	4 Wells	71"	35.5"	52"	115	5/17.6	NO	625
CHS35-8	6 Wells	95"	35.5"	52"	115	7.5/23.1	NO	880

MODEL NUMBER SUFFIX - B = Black W = White SS = Stainless Steel
 • Cases are designed to operate at 75 degrees Fahrenheit and 55% relative humidity
 • Specification subject to change without notice



Standard Specifications and Optional Features

CONSTRUCTION

- Foamed in place CFC free foam
- Single pane tempered front safety glass
- Heavy gauge steel super structure
- ETL listed for safety and sanitation

INTERIOR

- White, black, and stainless steel ends
- Stainless steel deck area around wells (for easy cleaning)
- Wet or dry heated individual wells
- Individual thermostatically controlled wells
- Separate drain for each well
- Flood lamp over each well

EXTERIOR

- White exterior
- Double pane rear removable doors
- Newly designed rear compression door jamb
- Heavy duty bright stainless steel top
- Vented front minimizes moisture on glass
- 1" bumper

FINISHES

- Satin finish extrusion on doors and door tracks
- White, black, and stainless steel front and ends
- Stainless steel mirror trim
- Stainless steel heavy gauge top - 17" W
- White exterior rear

LIGHTING

- Individual heat lamps over each well - 150W each

Important Note:

All refrigerated cases are designed to operate in an environment of 75 degrees and 55% relative humidity. Product must be cooled before being displayed within the case.

DRAIN IS REQUIRED

Electrical Requirements

Model No.	Wells	Volts	Phase	AMPS
CHS35-4	3	120V/208V	1	3.8A/17.3A
		120V/240V	1	3.8A/20.0A
		120V/208V	3	3.8A/10.0A
		120V/240V	3	3.8A/11.6A
CHS35-6	4	120V/208V	1	5.0A/23.1A
		120V/240V	1	5.0A/26.7A
		120V/208V	3	5.0A/15.3A
		120V/240V	3	5.0A/17.6A
CHS35-8	6	120V/208V	1	7.5A/34.6A
		120V/240V	1	7.5A/40.0A
		120V/208V	3	7.5A/20.0A
		120V/240V	3	7.5A/23.1A



Technical Data

Model No.		CHS35-4	CHS35-6	CHS35-8
Length		50"	71"	95"
Height		55"	55"	55"
Depth		35.5"	35.5"	35.5"
# of wells		3	4	6
(Dimensions are +/- 1/4")				
Voltage - standard		120/240	120/240	120/240
Phase		3	3	3
Amperage		3.8/11.6	5/17.6	7.5/23.1
Voltage - optional		120/240	120/240	120/240
Phase		1	1	1
Amperage		3.8/20	5/26.7	7.5/40
Voltage - optional		120/208	120/208	120/208
Phase		3	3	3
Amperage		3.8/10	5/15.3	7.5/20
Voltage - optional		120/208	120/208	120/208
Phase		1	1	1
Amperage		3.8/17.3	5/23.1	7.5/34.6
Exterior color		W, B, SS	W, B, SS	W, B, SS
Interior color		W, B, SS	W, B, SS	W, B, SS
Floors		W, B, SS	W, B, SS	W, B, SS
# of top rear doors		2	2	2
Front viewing area		26"	26"	26"
Bottom Storage		NO	NO	NO
Door size		19.19" x 19.19"	19.19" x 29.5"	19.19" x 19.19"
Shipping Info				
Height		58"	58"	58"
Depth		44"	44"	44"
Length		61"	87"	109"
Gross weight		450	595	850
Cubic feet		90	128	164

(ALL WHITE OR ALL BLACK, NO EXTRA CHARGE—IF COLORS ARE MIXED AN ADDITIONAL CHARGE WILL APPLY)

Prefix

SC = Self Contained
R = Remote

Suffix

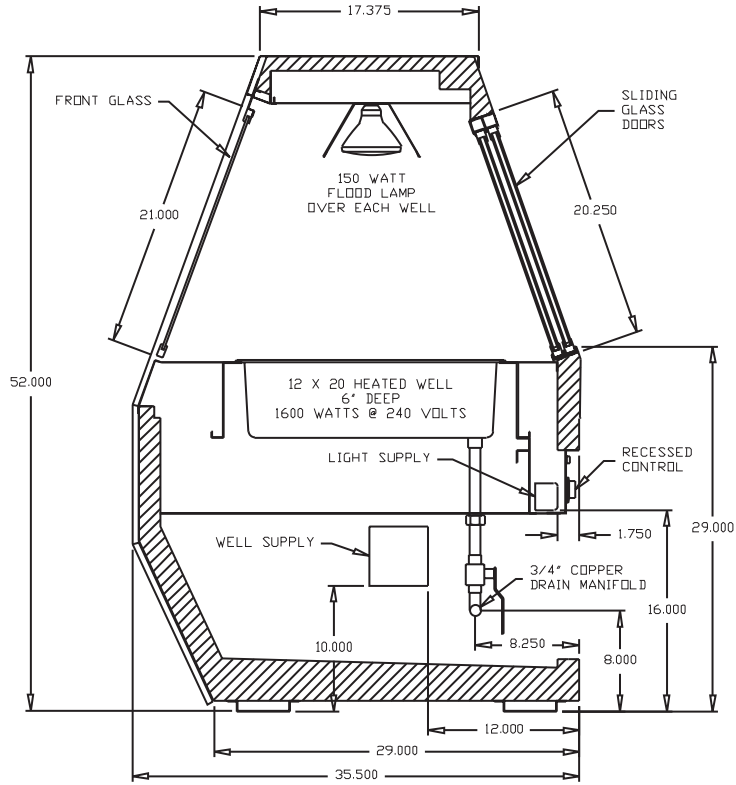
B = Black
W = White
SS = Stainless Steel
LS = T8 lighting
LED = LED lighting

- Cases are designed to operate at 75 degrees Fahrenheit and 55% relative humidity
- Cases are equipped with drains; check your local building codes for connection requirements.
- Specification subject to change without notice



Technical Data • Side View • Plan View

Cross Section



Size	L	R	C	D
4	50	25	25	33
6	71	9	18.250	45.875
8	95	9	18.250	57.875
10	119	9	18.250	69.875
12	143	9	18.250	81.875

Plan Views

