



# T&S BRASS AND BRONZE WORKS, INC.

2 Saddleback Cove / P.O. Box 1088  
Travelers Rest, SC 29690

Model No.

**B-2282-F SERIES**

Item No.

Travelers Rest, SC: 800-476-4103 • Simi Valley, CA: 800-423-0150 • Fax: 864-834-3518 • www.tsbrass.com

This Space for Architect/Engineer Approval

Job Name \_\_\_\_\_ Date \_\_\_\_\_

Model Specified \_\_\_\_\_ Quantity \_\_\_\_\_

Customer/Wholesaler \_\_\_\_\_

Contractor \_\_\_\_\_

Architect/Engineer \_\_\_\_\_

Flow Rate  
(GPM  $\pm 15\%$ )

Model Number

0.25

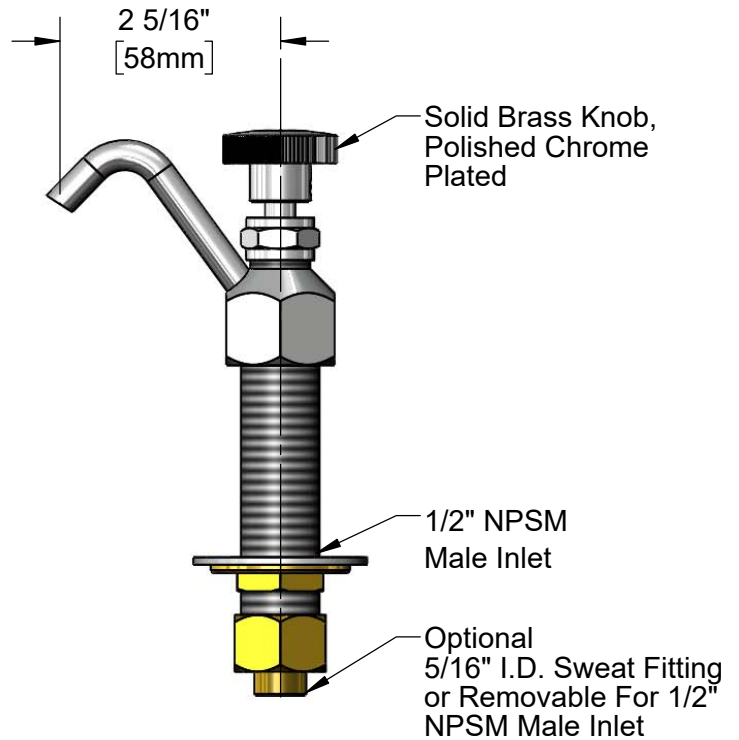
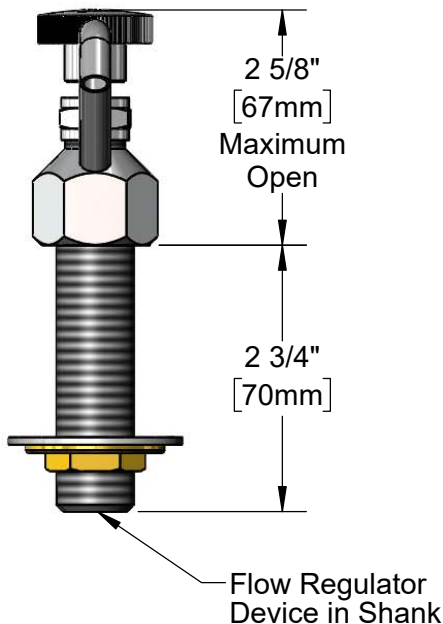
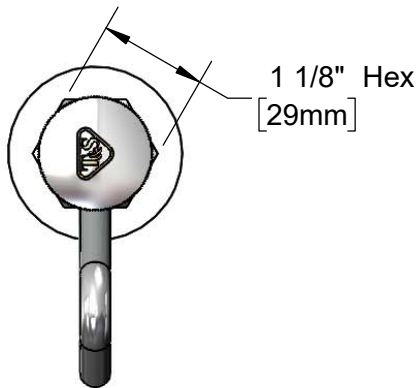
B-2282-F03

0.50

B-2282-F05

Notes:

1. Select Flow Rate Desired, then Select Corresponding Model Number



Rough-In Requirement:

$\phi 7/8"$  [22mm] Mounting Hole

Product Specifications:

Flow Control Dipperwell Faucet with Flow Regulator (Refer to Chart)

Product Compliance:

ASME A112.18.1 / CSA B125.1

NSF 61 - Section 9

NSF 372 (Low Lead Content)



# T&S BRASS AND BRONZE WORKS, INC.

2 Saddleback Cove / P.O. Box 1088  
Travelers Rest, SC 29690

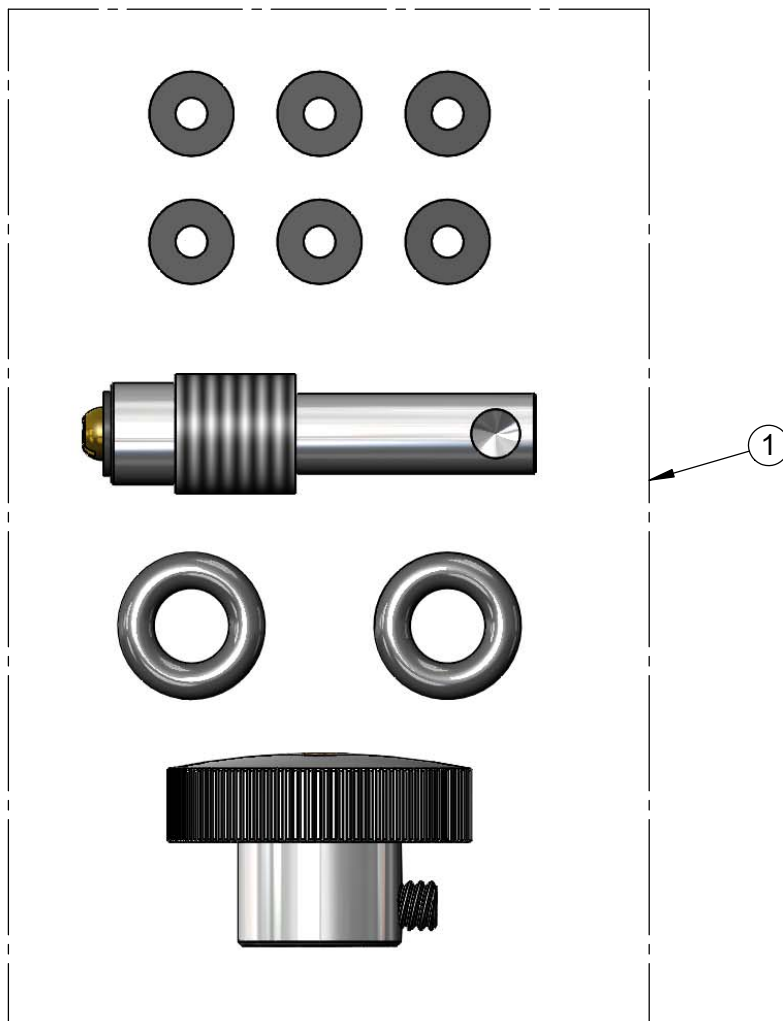
Model No.

**B-2282-F SERIES**

Item No.

Travelers Rest, SC: 800-476-4103 • Simi Valley, CA: 800-423-0150 • Fax: 864-834-3518 • www.tsbrass.com

ITEM	PART NO.	DESCRIPTION
1	B-2282-RK	Parts Kits for Dipperwell



Product Specifications:  
Flow Control Dipperwell Faucet with Flow Regulator (Refer to Chart)

Product Compliance:  
ASME A112.18.1 / CSA B125.1  
NSF 61 - Section 9  
NSF 372 (Low Lead Content)